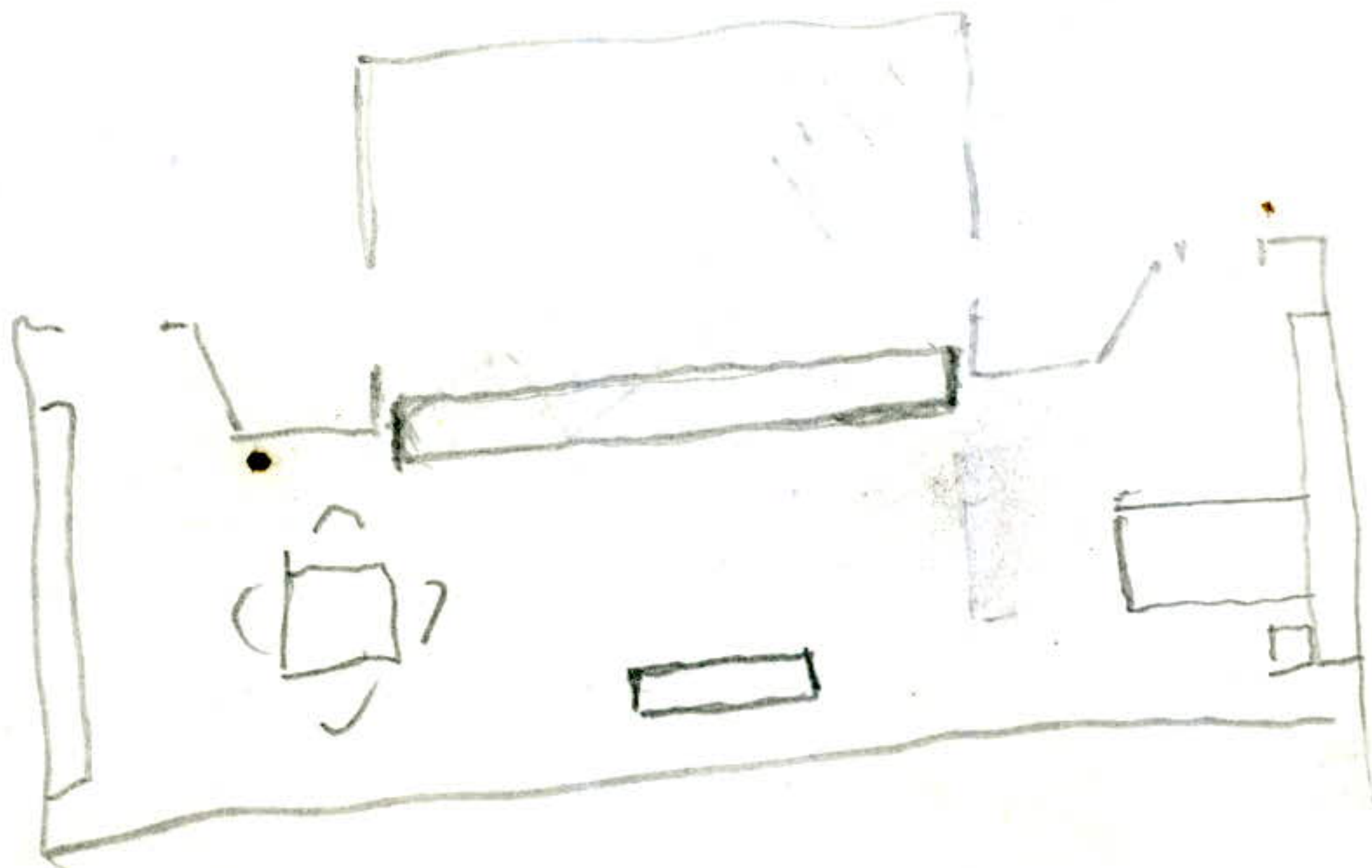
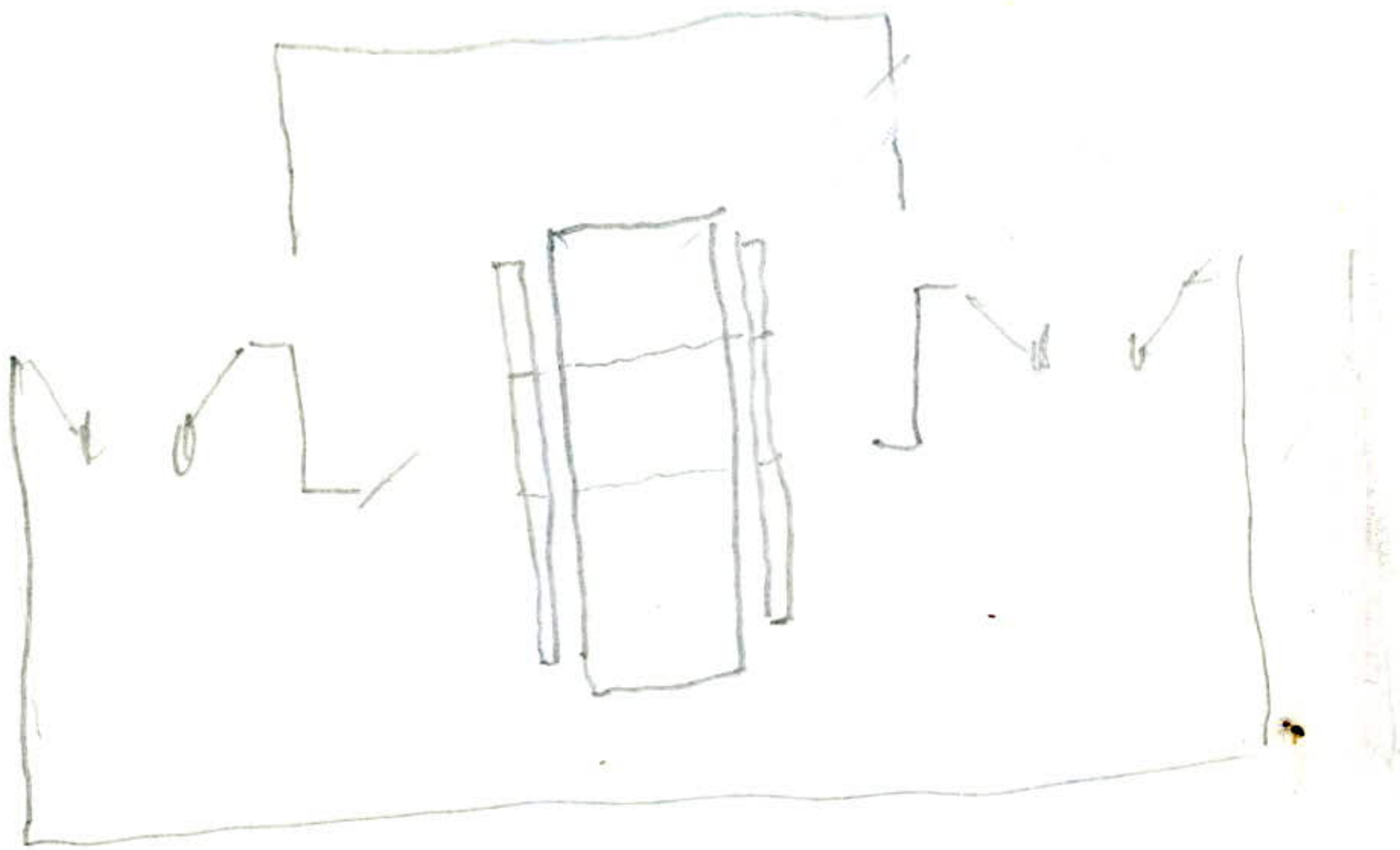
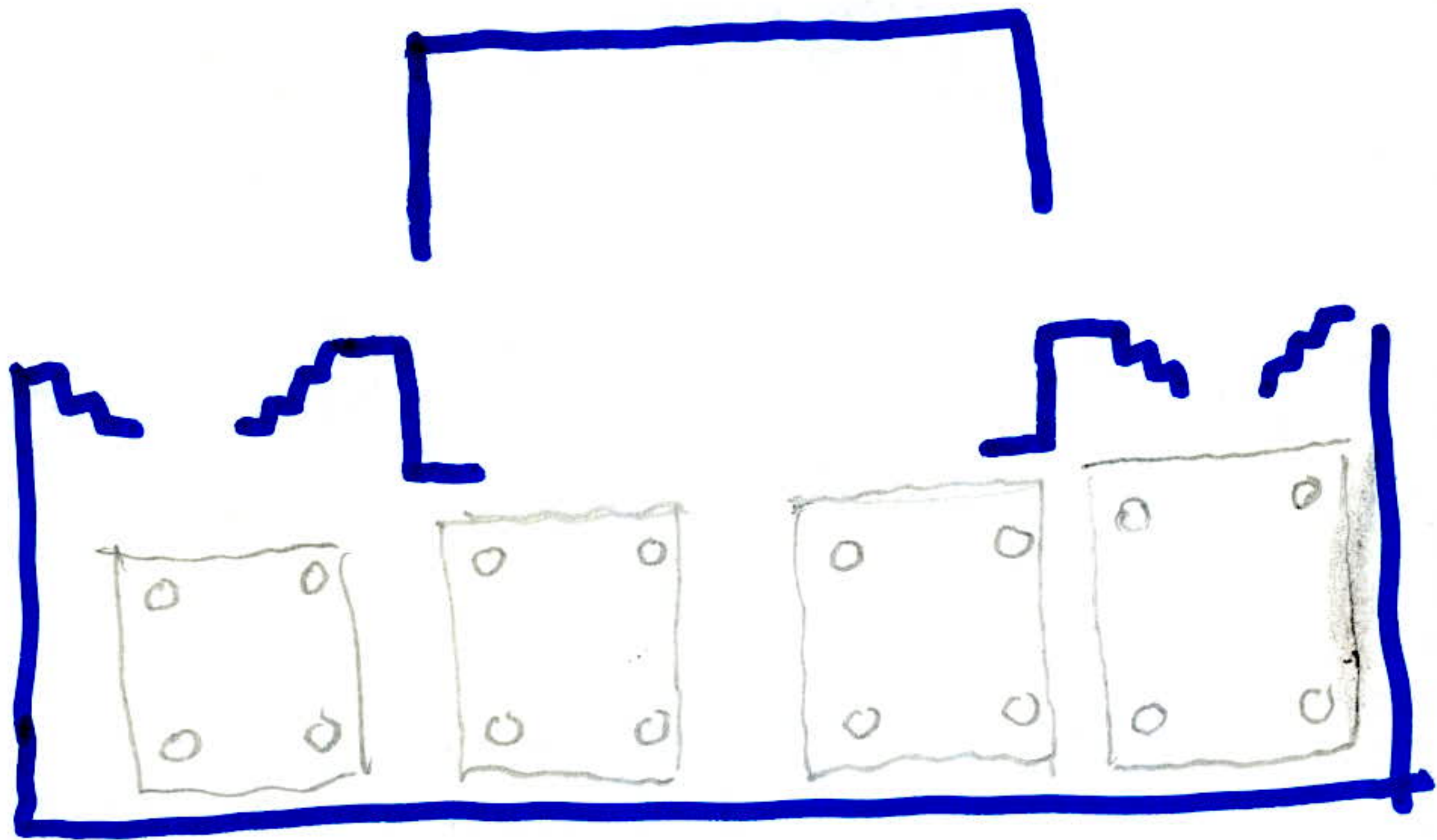
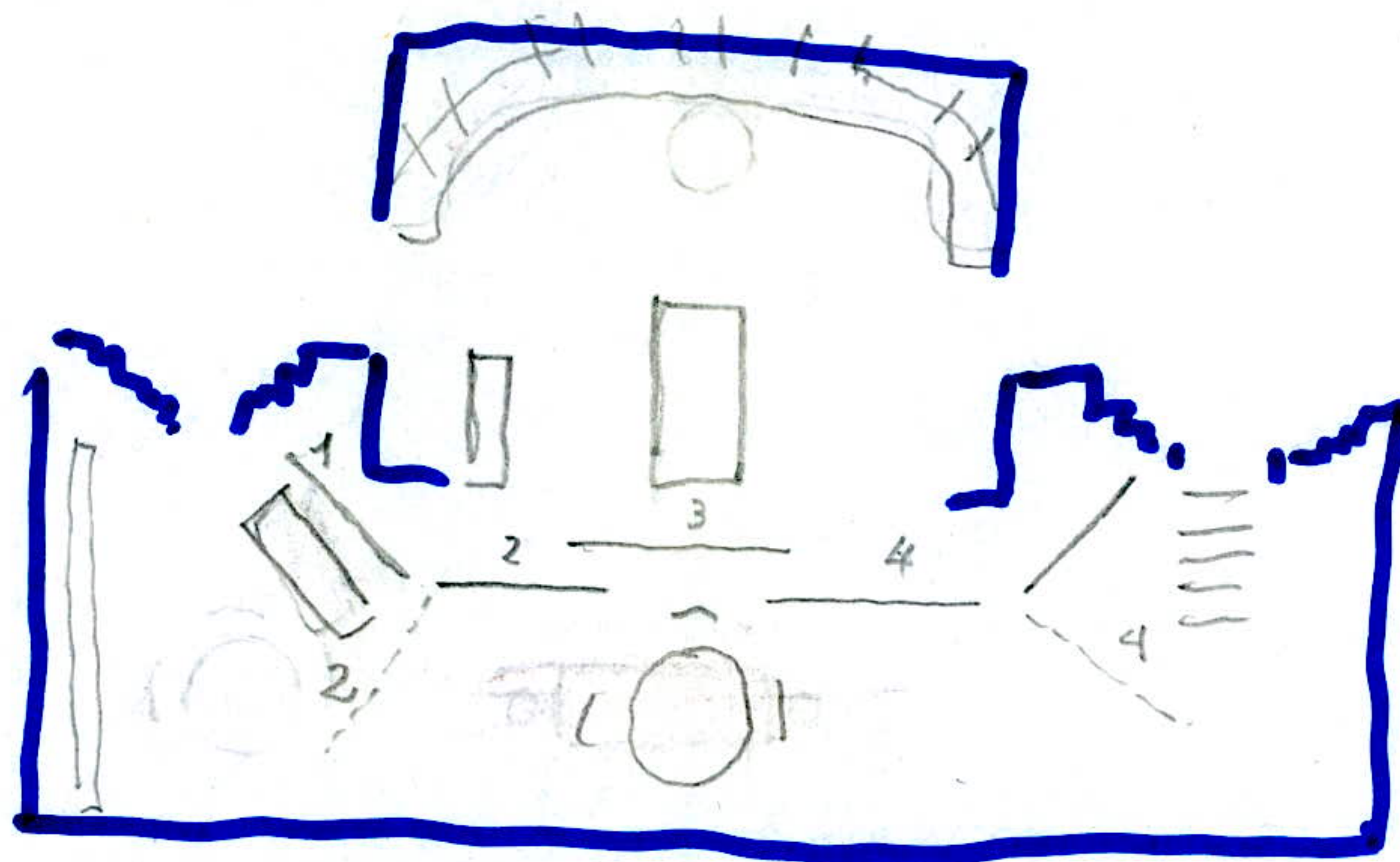
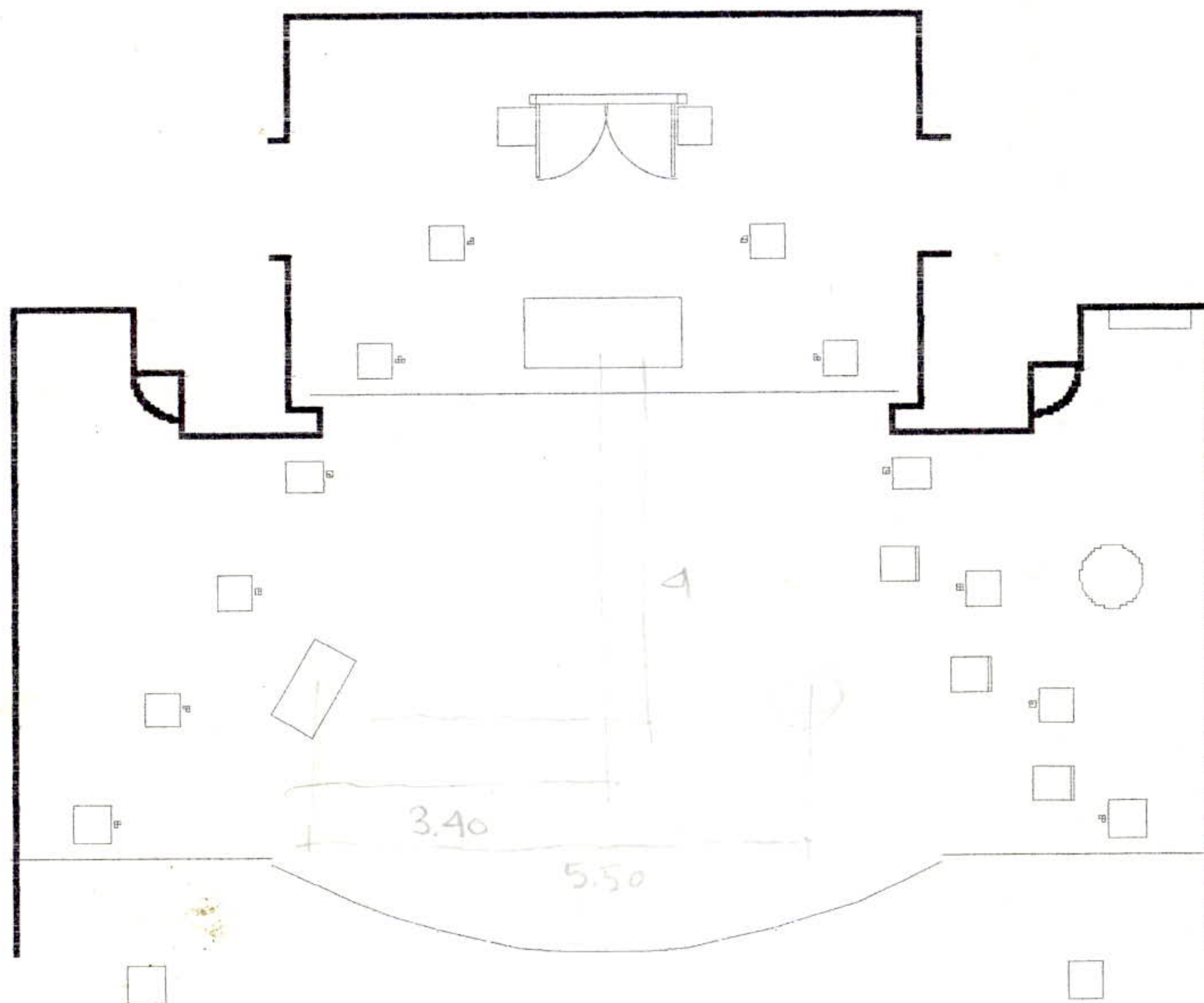


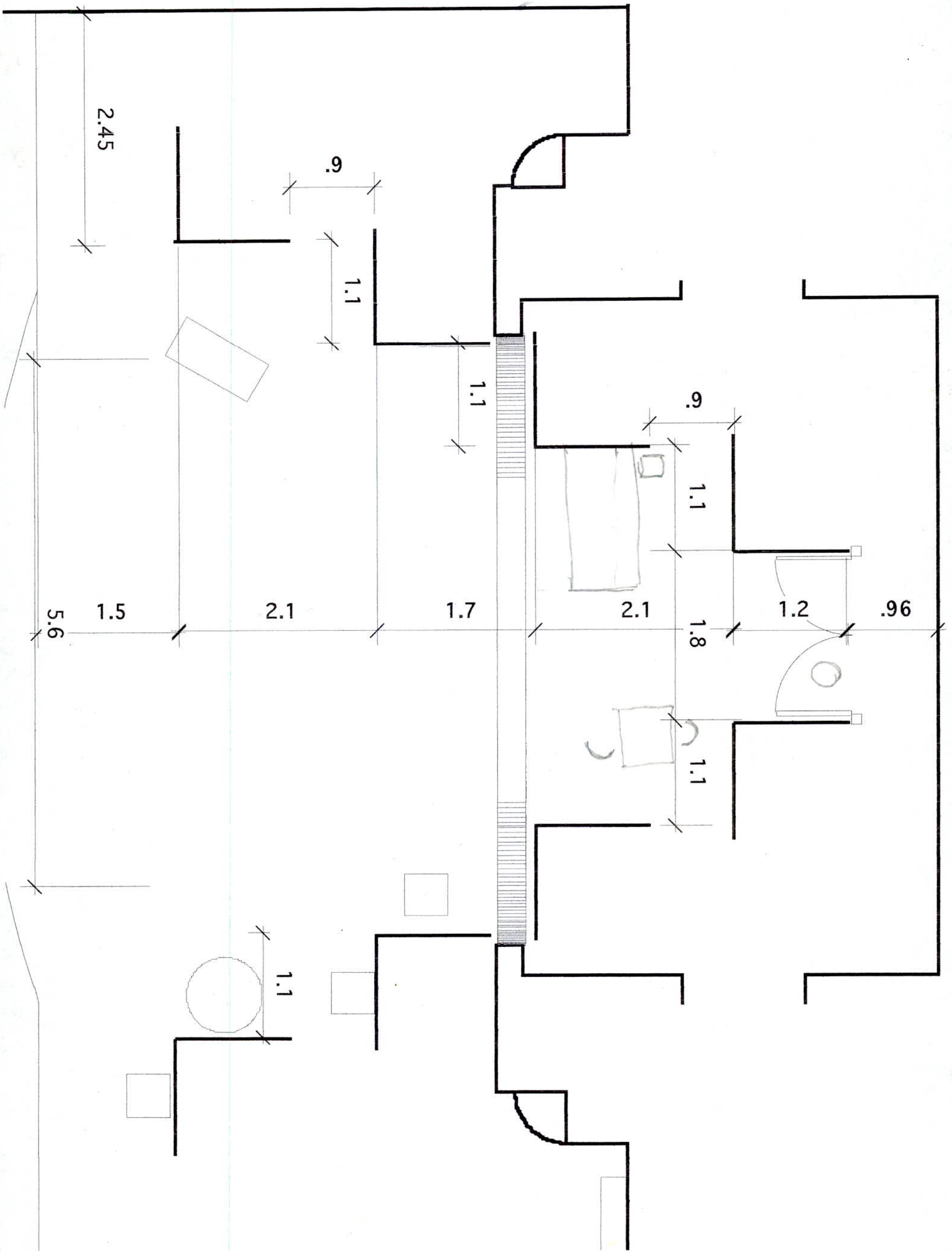
EL MALENTENDIDO. DIRECCION: JUAN CARLOS GENE. ESCENOGRAFIA: CARLOS DI PASQUO. PLANTA. ESC. 1:100

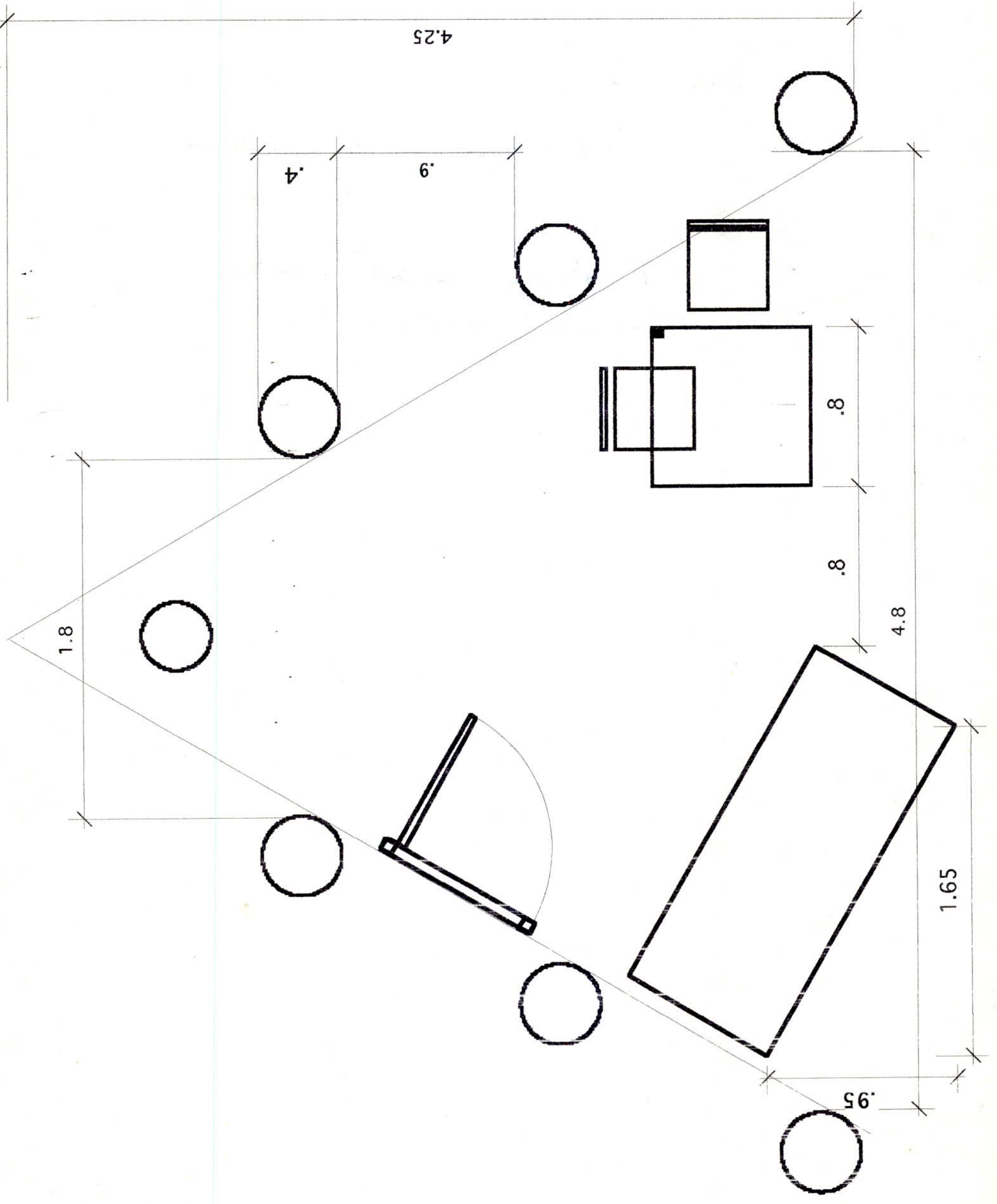




EL MALENTENDIDO







Parusa pag. 1.

T y D ~~colores~~ encienden candelabros.

1^a Parusa pag. 2.

T colorea selas de adelante; D guita.

" Que por un habito en ferio

